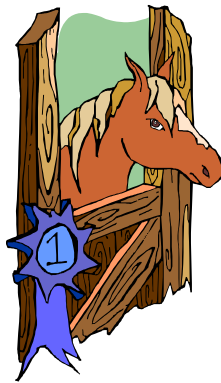


2010
Academy Information Booklet



7th Heaven Farm
Derrickson Road
Morehead, KY 40351
Nicole Cell: 606-776-9775
Barn: 606-783-1049

Special “Thank You” to Dr. Leslie Perry for designing this booklet for 7HF students in 2008.

The TWHBEA/WHOA Academy Program

- The Academy Program is sponsored by the Tennessee Walking Horse Breeder's & Exhibitor's Association (TWHBEA) and the Walking Horse Owners Association (WHOA). TWHBEA is the breed registry of the Tennessee Walking Horse.
www.twhbea.com
- It is designed to introduce riders to the show ring experience, and provides a low-key and more economical environment to learn and have fun showing a Tennessee Walking Horse.
- Regular Academy Shows, a.k.a. **Winter Tournaments**, are held in January, February, and March. An Academy Championship show is held at the end of March during the National Trainer's Show, at the famous Celebration show grounds in Shelbyville, TN.
www.twhnc.com.
- **Summer Academy** - Some open shows offer Academy classes as a part of their show during the regular summer show season. These classes are normally prior to the start of the show.
- Each Academy show is judged by a licensed Tennessee Walking Horse judge.
- TWHBEA certified Instructors are allowed in the ring while you are showing the horse.
- 7HF riders are eligible to show Academy if they:
 1. Are taking consistent lessons from TWHBEA certified Instructor, Nicole.
 2. Show a horse used in the 7HF lesson program
 3. Have not worn a full suit and competed in affiliated show (Exception: 4-H and Country Pleasure Classes)
 3. Are any age: Academy is for both adults and youth
 4. Show Rider Practice Classes are available for riders who have experience showing.

Academy High Point Program

- WHOA offers Academy high point awards each year. These are presented at the February 13 banquet. (Academy Awards)
- The awards are based on the number of points each rider receives based on how many times they have shown and their placing at each show.
- To be eligible for the youth high point awards in 2010:
 1. Get an Academy Card issued by WHOA
 2. Show as many Academy shows as possible to improve placing

Annual Show Requirements

- Apply for a 2010 WHOA Show Card: Go online at www.walkinghorseowners.com and specify Academy rider. You will need to download form and mail in.

2010 Show Fee Schedule

Show fees are per show. They will cover the cost of horse rental, entries for 2 classes, hauling and transporting horses, schooling of the horse (prior and during show), coaching at the show, show preparation of the horse(s), show supplies, and use of show tack and equipment. *These fees may change in the case of unforeseen circumstances (fluctuation in fuel, etc). You will be informed if a change must be made.*

Local (within 70 miles):

Individual	\$150.00
Family (2 or more rate)	\$135.00

Kentucky (61 - 125 miles):

Individual	\$190.00
Family (2 or more rate)	\$175.00

Within 6 hours

Individual	\$350.00
Family (2 person rate)	\$250.00

Out of State (Over 6 hours)

Individual	\$500.00
Family (2 person rate)	\$425.00

*Occasionally, there are opportunities to show in additional classes. Extra classes will be \$20.00 each.

Required Academy Show Attire

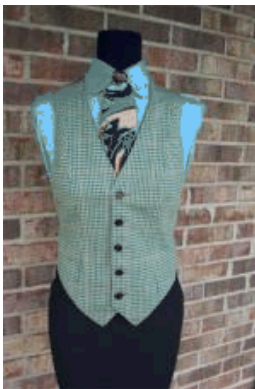
Each rider is responsible for his/her own personal show attire. Tennessee Walking Horses are shown in saddle seat style clothing. Competitors who are dressed in quality, fitted attire are the riders who average the highest placements. Competition at the Academy Championships requires the best attire you can arrange in order to win. Image and presentation is vital to attracting the judges eye and pencil!

You will need:

- **Helmet** – Black is recommended, but color matching the outfits are fine. Must be ASTM-SEI approved.
- **Jodhpur pants** – Black, navy, dark brown, or any custom fabrics. Unless you have a pair custom made, expect to let the hem length out after you purchase them. The bottom of the pant should completely cover and hang **below** the heel of your boot when sitting on the horse. The pants should be snug and fitted through the calves when sitting on the horse for a tailored look.

- **Jodhpur boots** – Black, navy, or dark brown. Should match the color of the pant or be black. Zip ups fit well and do not require taping at the ankle.
- **Long sleeved men’s style shirt with collar** – MUST have a stiff, fold down collar. Buy a solid color or striped shirt to coordinate with your tie and vest. **DO NOT BUY A WHITE SHIRT.** The shirt needs to be very fitted around your neck and in the cuffs of the sleeves. Only one finger should fit between the button and neck.
- **Tie Bar** – A tie bar is required when there are no buttons on the collar wings. A tie bar controls the collar and keeps it secure.
- **Show vest** – be creative in color choice! Plaid or solids are available. It should be very fitted: no bulging under the armpits, bagginess, or gaping in the bust line or waist. Have it altered to fit properly! The judge can not see your form unless it is fitted properly.
- **Men’s style tie** – be creative! The tie should have a size/width to match your frame. Petite women and small children should consider boy’s ties.
- **Show gloves** – black, navy, or dark brown. DO NOT buy white.
- **Tie downs** – button style. These keep your pants from riding up the ankle.
- **Number pins or magnets** – these are optional. These will be used to secure your number on the back of your vest. Magnets are much faster, safer, and will poke fewer holes than safety pins. Numbers will be trimmed to fit in the center of the rider’s back and size appropriate for the rider. Scissors should be a part of your show box.
- **Stirrup leathers and irons** – optional, but highly recommended. If you have your own, life will be much calmer at the show. We will adjust these to your ideal length and use them for practice lessons and use them at the show.

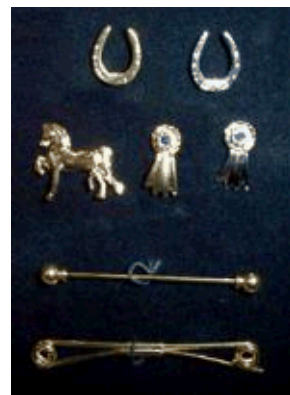
If you intend to compete at open shows, seriously consider purchasing a complete 3-piece saddle suit. A full suit will include matching jodhpurs, and coat, and a matching or coordinating vest. You can leave the coat at home and show Academy in the jodhpurs and vest. When summer shows begin, you can use the full suit for Country Pleasure unless you graduate to greater things!



Shirt, vest, tie combo



Jodhpur pants



Number pins & tie/collar bars



Show Gloves



Tie downs



Show boots

(photos from ehorseequipment.com and lechevalltd.net)

Hair and Jewelry

Ladies style their hair into a bun. The hair is pulled back into a low ponytail and then pinned into the bun style. You will need hairnets and bobby pins to do this. Earrings are optional. Wear small stud earrings only, NO dangle earrings!

The fit of the show clothes make or break the look. Unless you can afford custom, you will definitely want a seamstress to alter the clothes for a tailored look. We have a seamstress in Morehead named Bessie Erwin and Nicole can supply you with her number.

Where to Buy What You Need

Many riders have found beautiful shirts and ties at Walmart, Goodwill, and sales at mall stores. I recommend starting with consignment for other items. Consider buying a little big and altering down for children's outfits. They could be let back out as they grow. Only one size up is recommended.

If you buy show clothes from Petsmart/State Line Tack, you should be aware that the English clothing is Hunt Seat and it is **incorrect** – however their western stuff is correct. They do have helmets and gloves. Tractor Supply also has helmets.

Consignment:

The Good Habit – Martha Pope, owner. Consignment riding apparel.

www.thegoodhabitonline.com

Phone: 502-253-0618

Fax: 502-254-3538

12606 St. Clair Drive

Middletown, KY 40243

COMMOTION!

Consignment Riding Apparel and Eclectic Handmade Goods

Heather Marchiafava

214 W. Maxwell St.

Lexington, KY 40508

859-552-5983

www.shopcommotion.com

www.trot.org

www.ehorseequipment.com (consignment rack in rear of store also)

Off the Rack:

World Champion Horse Equipment (tack, equipment, and show clothing. Catalog available)

www.ehorseequipment.com

800-251-3490

Shelbyville, TN

Bedford Tack (tack, equipment, and show clothing)

800-523-4971

Fax: 931-437-2211

Shelbyville, TN

Custom Tailors of Saddle Seat Clothing & Accessories:

These locations also have rack clothing as well:

Le Cheval

www.lechevalltd.net

859-252-3481

711 Red Mile Road

Lexington, KY

Becker Brothers

www.beckerbrothers.com

859-252-2004

342 Romany Road

Lexington, KY

Marsha Shepherds

Marsha's On The Square

Shelbyville, Tennessee